

# System sheet HS IND-RW136-1

## Description

Crack-bridging, watertight system based on aromatic polyurea Hotspray.

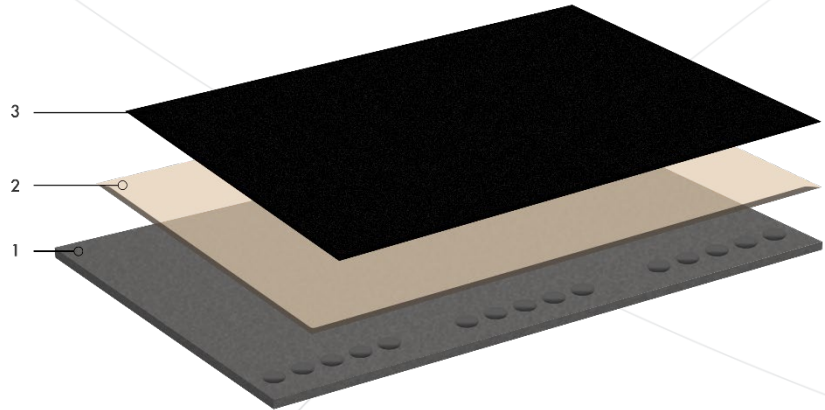
## Application area's

- Tank sealing on steel
- Steel water basins

## Most important properties

- Seamless
- Crack bridging
- Elastic
- Good chemical resistant

*\*Always check the suitability of the seal with regard to the medium being stored.*



1. Check the surface for salts, remove if necessary and sandblast SA 2.5 and 80 microns
2. A primer with anti-corrosion properties type: ProFast Primer RW ( $\pm 0.25 \text{ kg/m}^2/\text{layer}$ )
3. Liner based on pure polyurea type: Rocathaan Hotspray PA 136-T ( $\pm 3 \text{ kg/m}^2/\text{layer}$ )

For tank coatings, the maximum amount of water-soluble salts in mineral abrasives is 300 s/cm (equivalent to 30 ms/m).

For tank coatings, the maximum amount of water-soluble salts on the steel surface is 60 mg/m<sup>2</sup> (equivalent to 6 µg/cm<sup>2</sup>) of chlorine, determined using the Bresle method (ISO 8502-6).

Afterwards, check the sprayed liner for leaks using a pore tester.

Check before application the datasheets. If necessary, contact your technical advisor.

The stated consumption figures are indicative and based on smooth, flat surfaces. The actual consumption depends on the application method, roughness and absorbency of the substrate.

The information and consumption per layer are indicative.



Tel. +31 (0)85 78 200 20 • Fax. +31 (0)85 78 200 21  
www.prokol.nl • info@prokol.nl

**Liquid synthetic materials for a sustainable future**